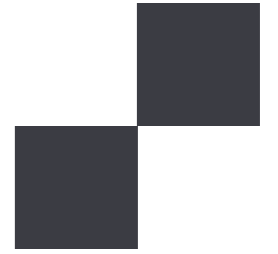




Amtico
Décor

Uniquely **amtico**



Contents

Introducing Amtico Décor	4 - 5
Ways to Use Décor	6 - 7
Amtico Décor Designs	8 - 9
Laying Patterns	
Classic	10 - 15
Geo	16 - 19
Echo	20 - 23
Chequer	24 - 25
The finishing touches	26 - 29

Introducing Amtico Décor

Featuring decorative geometric designs, this artisan collection of precision-cut statement floors seamlessly blends Victorian styling with a contemporary look and feel. Inspired by traditional ceramic floors, our Classic, Geo, Echo and Chequer patterns add vibrancy, playfulness and a sense of visual intrigue to rooms and living spaces.



Ways to use Décor

Whether it's a playful border around a kitchen island, a statement floor in a hallway or an intricately detailed rug feature in a dining space, our Décor collection is perfect for those who are looking to create an impact. With a range of colourways and patterns to choose from, there's something for every home.



Achieve this floor:
Feature area - Echo Ink DC491
Field - Aged Oak AR0W7710
in Halcyon Pleat laying pattern



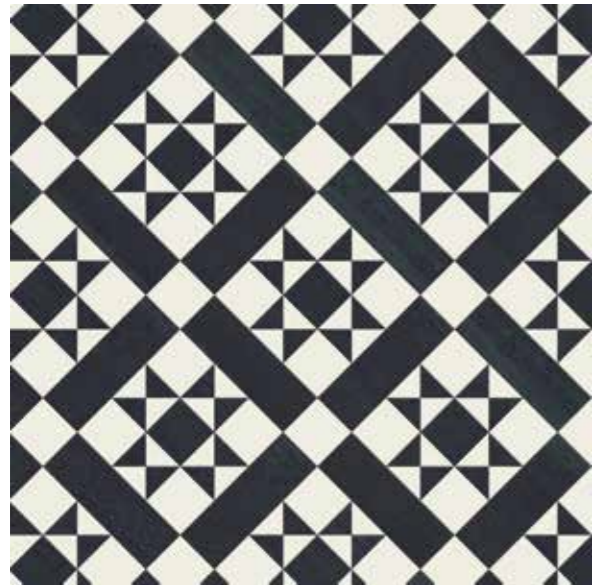
Amtico Décor Designs

Amtico Décor is a stylish flooring collection that will take you effortlessly back to the Victorian era. Based on designs from the Amtico archives, Décor works equally well in period and contemporary settings, to cover an entire floor or to create a focal point.



Classic

A kaleidoscope pattern in complementary colours. Use alone, or add a unique decorative border for harmonious style.



Geo

A simple geometric square that updates the Victorian look. Let the pattern flood the floor, or use a border or rug feature to frame statement interior pieces.



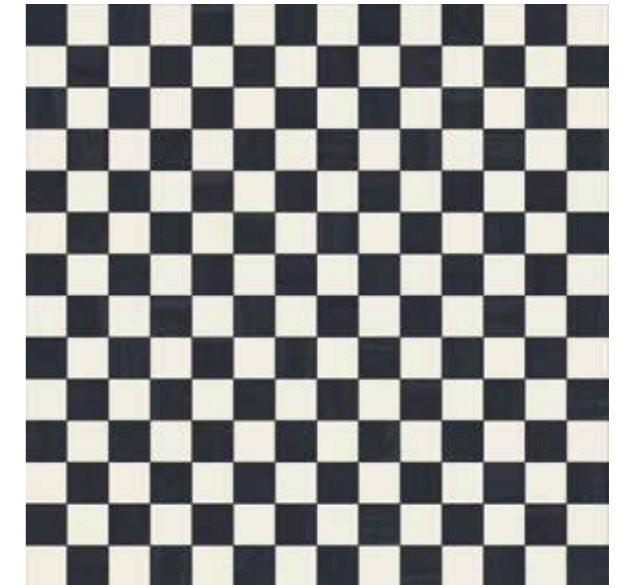
Echo

A contemporary pattern which uses a simple two-colour combination to form a geometric, reflective design. Equally beautiful as a bold statement to flood a floor, or as a ceramic-style decorative rug feature.



Chequer

A sophisticated two-colour masterpiece, made with mini square tiles for elegant design impact.





Classic

From bold black and white to complementary colour combinations, Classic's eye-catching shapes create elegant floors with a modern take on an enduring pattern.

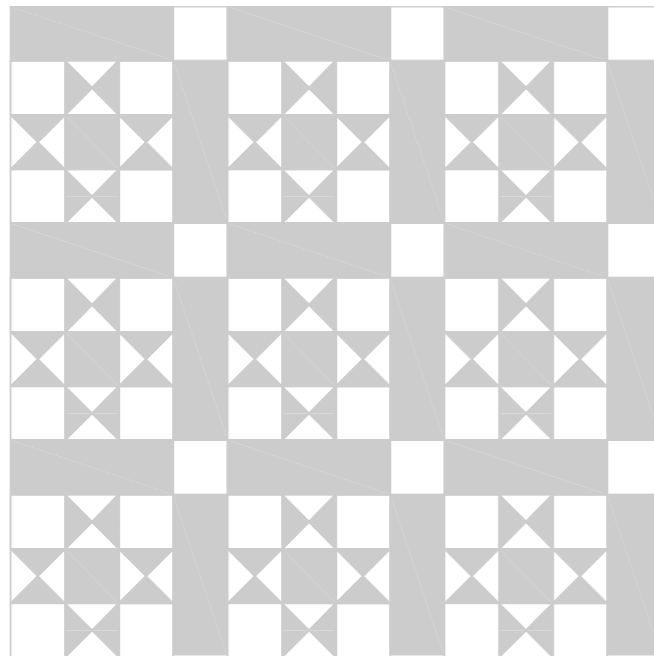
1

Pattern

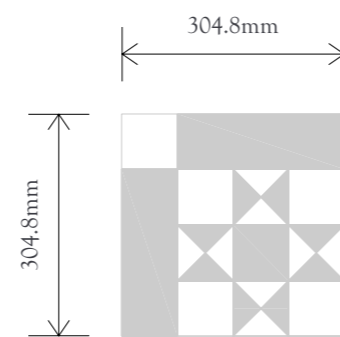
5

Colourways

Layout Illustration

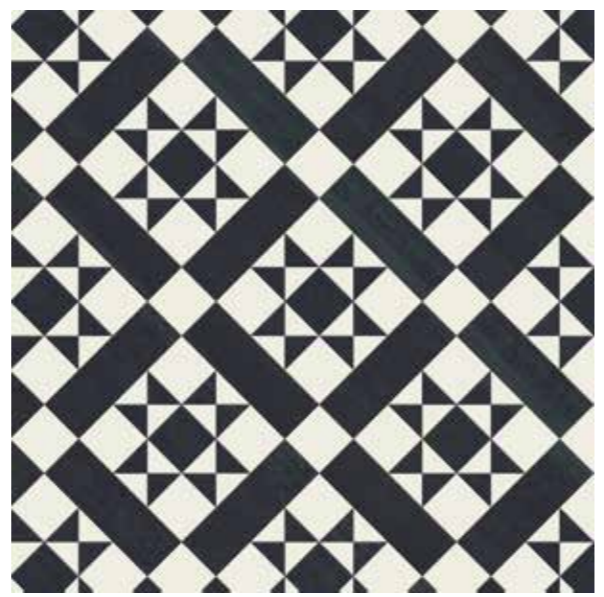


Assembled Tile



▶
Classic Mono DC257
 Make a statement with bold and beautiful black and white. This classic pairing creates a stylish welcome in a hallway.

Shown here
 Pure Plain White
 Graphite Slate



▶
Classic Aquamarine DC486
 Think stone, sea and sky - a muted palette that brings harmony to a living space. This accessible design will work alone or alongside a complementary product.

Shown here
 Stucco Flax, Diffusion Chambray, Diffusion Charcoal, Stucco Quartz & Stucco Putty



◀
Classic Moderna DC313
 The ultimate black and white pattern, made with pure colour for a clean, bold and detailed floor design.

Shown here
 Pure Plain White
 Pure Plain Black



◀
Classic Goldstone DC487
 Four earthy tones interrupted by a burst of blue. This versatile flooring works equally well as a complete floor or a standout feature, and perfectly suits a traditional scheme.

Shown here
 Diffusion Chambray, Stucco Quartz, Graphite Slate, Stucco Clay & Encaustic Jasper

▶
Classic Argent DC294

This striking design epitomises classic beauty in this marble and metallic grey stone combination.

Shown here
Onyx Marble, Stria Volcanic
& Kura Caraway



◀
**Marble Diamond
Border DC296B**

Designed specifically for Classic Argent, this border perfectly complements the design to create maximum impact.

Marble Diamond Corner DC296C

Shown here
Onyx Marble, Stria Volcanic & Kura Caraway



Geo

Taking its name from Geometric, Geo is a contemporary pattern inspired by the traditional tiled spaces of the Victorian era.

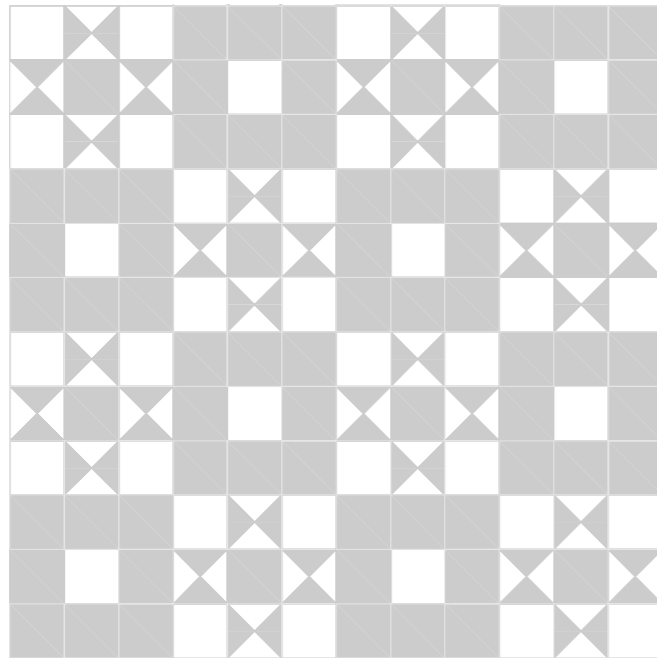
1

Pattern

4

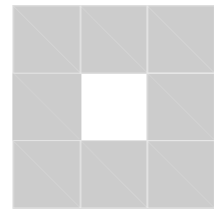
Colourways

Layout Illustration



Assembled Tile A

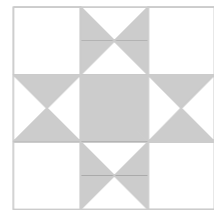
228.6mm



228.6mm

Assembled Tile B

228.6mm



228.6mm



Geo Melrose DC488 used as a rug feature with a Toulouse Oak AR0W8430 Field in a Stripwood laying pattern

▶
Geo Melrose DC488

The exquisite stone tones of Stucco Putty against Stucco Quartz are reminiscent of the natural world.

Shown here
Stucco Putty
Stucco Quartz



▶
Geo Mono DC482

Strong, deep grey-black tones underpin a darker version of Geo, created with a foundation of Graphite Slate, highlighted with Plain Pure White decorative shapes.

Shown here
Graphite Slate
Pure Plain White



◀
Geo Poplin DC489

Two neutral shades of our Stucco colour palette add warm and gentle earthy tones to this Geo pattern.

Shown here
Stucco Pebble
Stucco Quartz



◀
Geo Adelphi DC490

A muted pop of colour and a cool cream combine to create a soft, inviting update to this traditional tile design.

Shown here
Diffusion Chambray
Stucco Quartz





Echo

From neutral earthy colour combinations to striking charcoal and marble, this contemporary geometric, reflective design can create a bold statement to flood a floor.

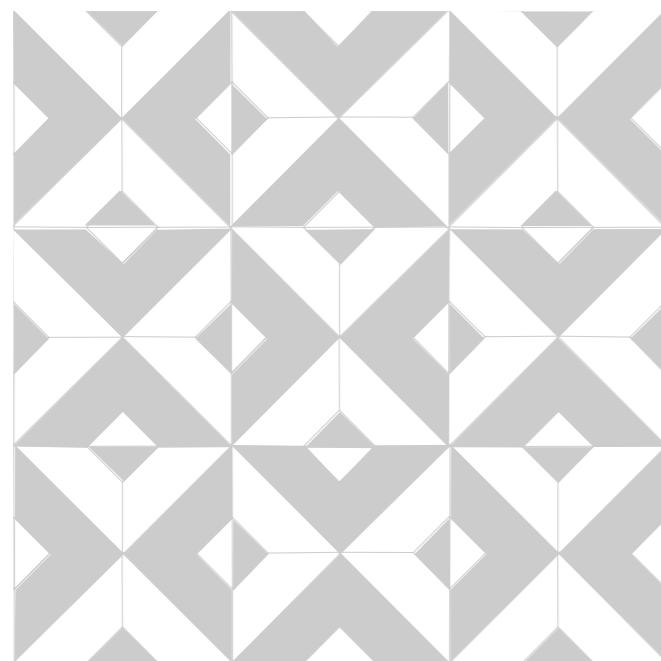
1

Pattern

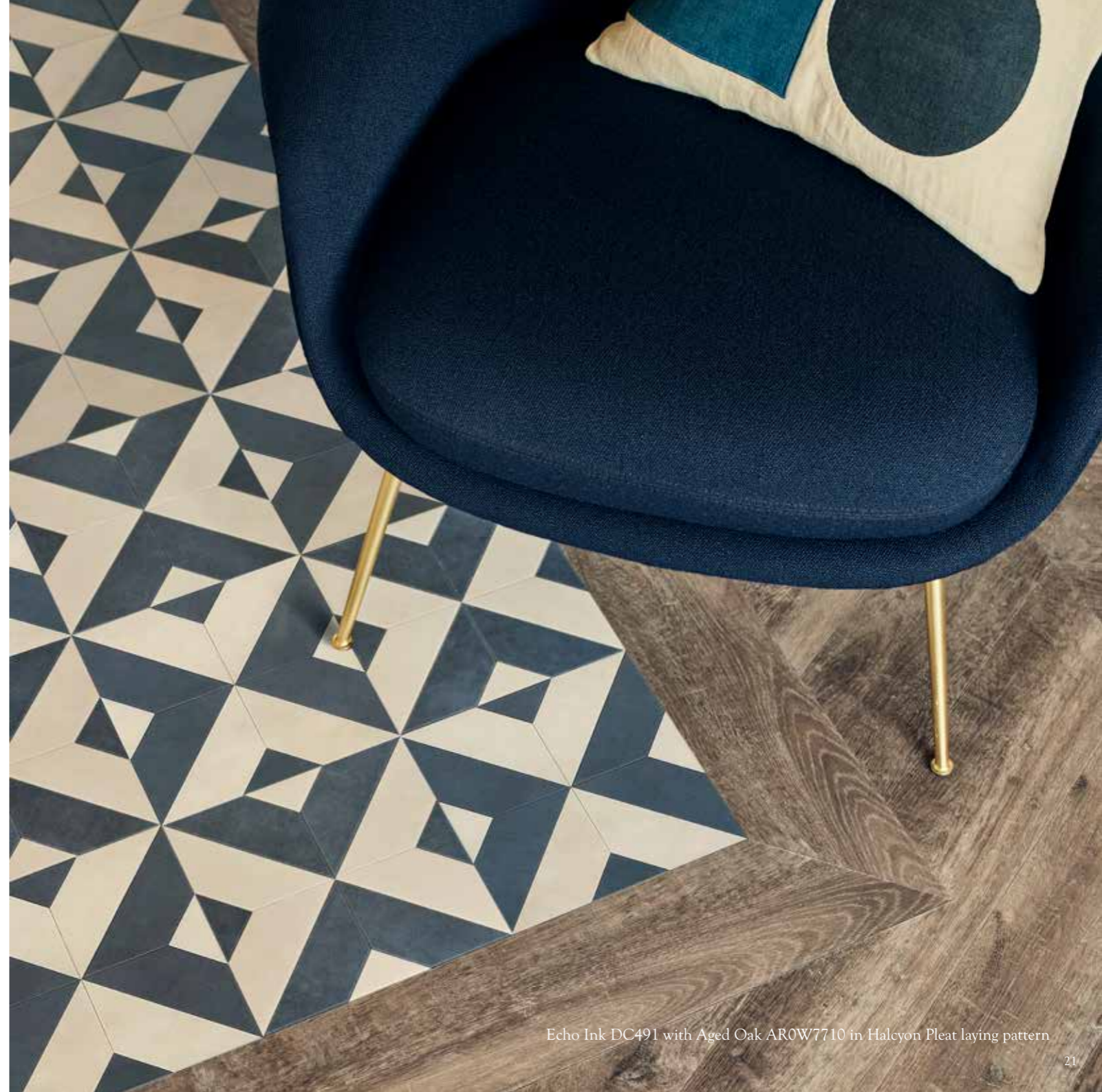
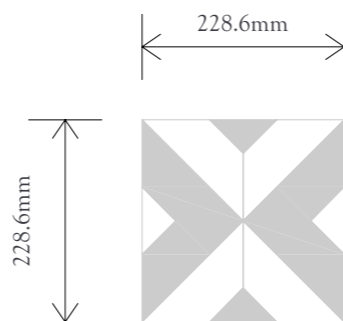
4

Colourways

Layout Illustration



Assembled Tile



▶
Echo Ink DC491

Deep grey-blue and cream combine to offer a sophisticated twist on more conventional black and white ceramics.

Shown here
Stucco Flax
Stucco Quartz



▶
Echo Shadow DC492

Obscure the angular intricacy of Echo by blending two shadowy complementary greys, for a soft yet contemporary design.

Shown here
Modernist Lintel
Modernist Spire



◀
Echo Keys DC456

Striking yet simple – contrast rich charcoal with fresh marble for a dramatic geometric statement.

Shown here
Graphite Slate
Onyx Marble



◀
Echo Ware DC493

Neutral earthy tones combine and contrast to perfectly demonstrate how this graphic, symmetrical design can work in more traditional schemes.

Shown here
Stucco Clay
Stucco Quartz





Chequer

Two modern stones and a mini scale design combine perfectly to inject a traditional look into any space.

Tile sizes: 101.6 x 101.6mm

1

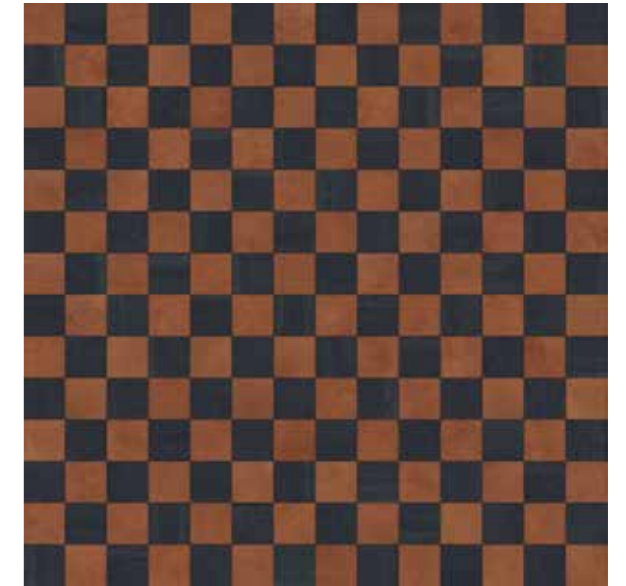
Pattern

2

Colourways



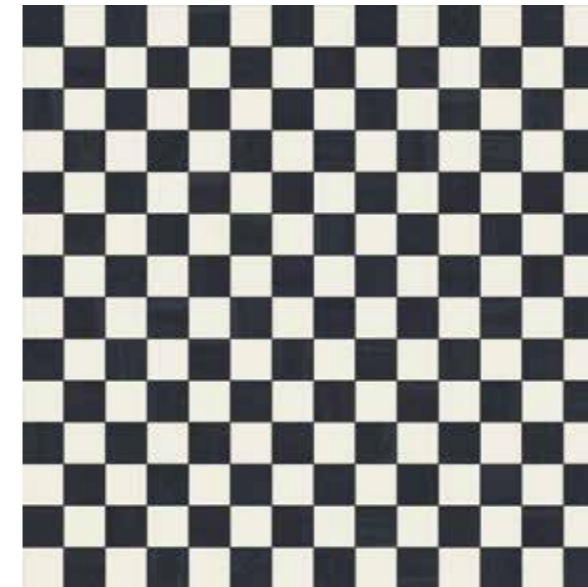
Chequer Queenside DC500



Chequer Queenside DC500

Sleek, deep grey Graphite Slate is offset by the rich terracotta of Encaustic Jasper for a bold, traditional look.

Shown here
Graphite Slate
Encaustic Jasper



Chequer Mono DC485

Dark grey and brilliant white provide beautiful contrast in this sleek and contemporary colour scheme.

Shown here
Graphite Slate
Pure Plain White

The finishing touches...

Introducing Décor borders and corners

Designed to enhance and finish off a room effortlessly, Décor borders and corners add stylish definition and finesse to any floor. Adding that all-important finishing touch for truly beautiful decorative styling, Décor's collection of specially designed borders complement and contrast with central Décor tile designs.

Bevelled Diamond

Border AR0B270B and Corner AR0C27SB - 76 x 914mm

Products shown: A = Pure Plain White, B = Graphite Slate, C = Pure Plain White



Designing with Borders

Choosing the right border has the power to transform a space. Useful for subtly zoning areas, drawing attention to an architectural focal point, or elegantly joining different flooring between rooms, borders undoubtedly elevate a room's aesthetic.

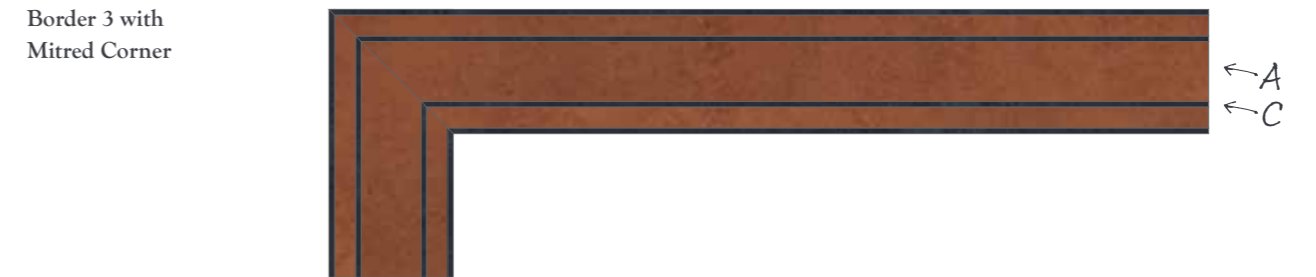
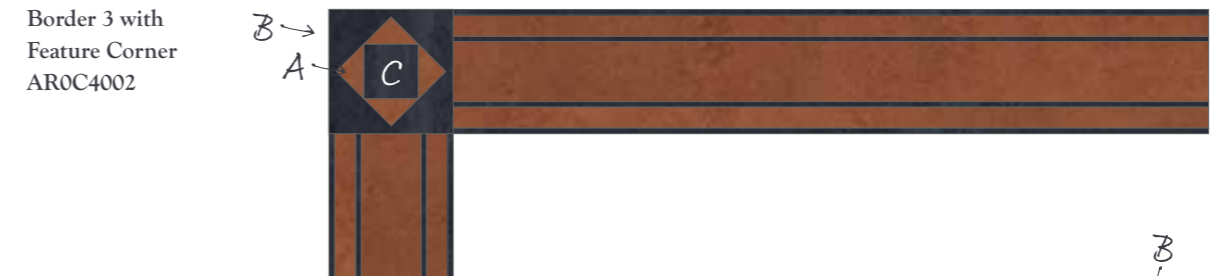
Border 1
 Border AR0B4000 - 89 x 914mm
 Products shown: A = Stucco Quartz, B = Diffusion Charcoal, C = Diffusion Charcoal



Border 2
 Border AR0B4001 - 89 x 914mm
 Products shown: A = Onyx Marble, B = Graphite Slate, C = Graphite Slate



Border 3
 Border AR0B4002 - 89 x 914mm
 Products shown: A = Encaustic Jasper, B = Graphite Slate, C = Graphite Slate





Classic Goldstone DC487 with Border 2 and Mitred Corner

Your local retailer

Your local Amtico flooring specialist can help make your flooring dreams a reality.

Order samples

Order free samples in advance to see how they work in your space.

Technical support

For advice on installation, preparation and care for your floor, call 02476 861 409 or email technical.support@amtico.com



amtico.com

0121 745 0800

For more inspiration
visit *amtico.com*

Amtico International

UK & European Sales

Solar Park

Southside

Solihull

West Midlands

B90 4SH

Tel: 0121 745 0800

Email: info@amtico.com

MLIT.BRU.B.S.DEC

amtico
flooring